

## STUDIO FEATURES + SERVICES



### Media Playback Servers

PHNTM Vision Workstations w/ Dual A6000 Cards facilitate dynamic playback solutions.



### Industry Leading LED

588 ROE Black Pearl 2 V2



### Color Workflows

Our proprietary solutions provide superior color depth and fine tuning capability.



### Unreal Ready

Best-in-class servers are dedicated to running real-time content in Unreal Engine.



### DMX Integration

Unreal Engine DMX integration drives fixture colors and MA3 lighting console.



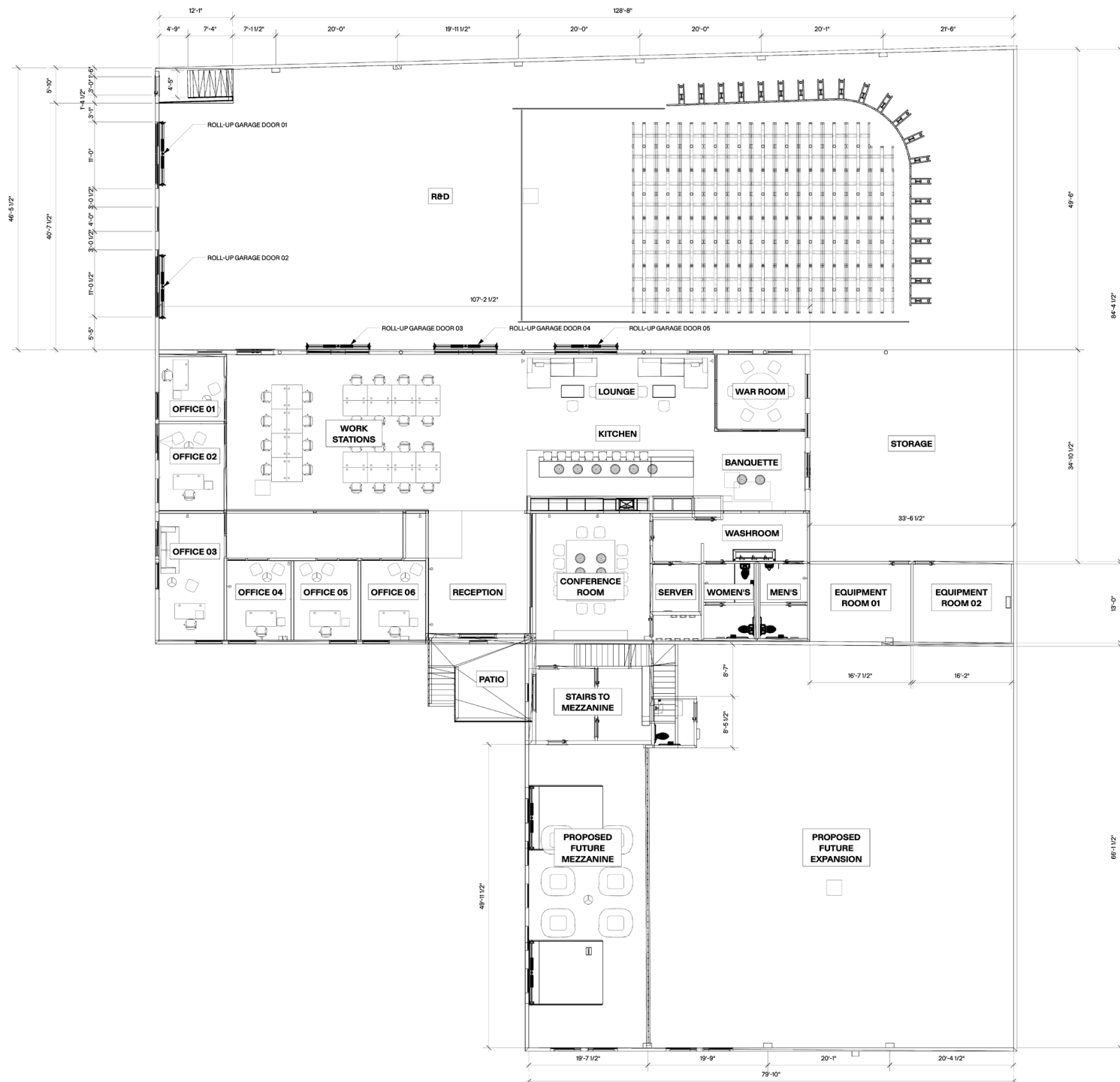
### Technical Support

Expert operators and engineers onsite can support productions as needed.



### Full Service

Our Creative Studio can support with design, narrative development, and any facet of creative à la carte.



1 [OVR] TOP/PLAN  
Scale: 1/100

# OVERVIEW FLOOR PLAN

## ■ VIRTUAL PRODUCTION SERVICES

- Background Replacement
- Front Plate Integration
- Custom Tablet and Desktop App
- DMX Inputs and Outputs
- Green Screen Comping
- VR / AR Extensions
- Motion Capture
- Volume Control Operations

## ■ STUDIO DETAILS

### LED Volume Dimensions

- 94' W x 24' H
- 8° Curved facet
- LED Ceiling Available upon request

### Space

- 10,000 sq ft. total + additional 7,000 sq ft. of usable office spaces

### Stage Dimensions

- 148' x 49'

### Loading

- 53' Truck Bay
- 26' Truck Bay

### Rigging

- Full 40' x 40' Rigging Grid
- 5,000lb Weight Load

